

COMPANY PROFILE



PT. Seongsan International



Vision & Mission

VISION

- Become the largest supplier of Polymer and Chemical rubbers in Indonesia
- Become the best rubber compounding manufacture in Indonesia

MISSION

- Facilitating rubber needs in Indonesia
- Providing high quality products at competitive price
- Becoming a trusted partner in terms of service and quality



About The Company

PT. Seongsan International was established in 2011 started to supply synthetic rubbers to Indonesian market. Currently PT. Seongsan International has developed rapidly, not only supplying synthetic rubbers but several other rubber chemicals.

PT. Seongsan International is now expanding the business scope from the trading to manufacturing and managing of bonded warehouse. PT. Seongsan International is starting to build own rubber compounding factory to give more choices for the customers and bonded warehouse facility.



Rubber Sheet



Synthetic Resin



Synthetic Rubber



Rubber Chemical

Company History



*The Begining Of
Seongsan*



Installation Machine



ISO Certification

TTEC
TOYOTA AUTO BODY
TOKAI EXTRUSION
*Approval Audit PT.
TTEC*

TTEC
TOYOTA AUTO BODY
TOKAI EXTRUSION
*FIRST DELIVERY
TTEC*

**JANUARY
2011**

**JANUARY
2024**

**FEBRUARY
2024**

**MARCH
2024**

**JUNE
2024**

**JULY
2024**

**AUGUST
2024**

**SEPTEMBER
2024**

**OCTOBER
2024**

Factory Establishment



- *First Production*
- *Bonded Warehouse Legal*



*Full Scale Sales
Begin*



*APPROVAL AUDIT
PT. HANKOOK TIRE*

Hankook
driving emotion

Why PT. Seongsan International

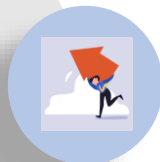
WHY
CHOOSE
US

Our services are covering
from finding suitable raw
materials to make
compounding formula and
manufacture of rubber
sheets



High Technical Skills

Professional R&D and production people



Strong Technical Back-Up

Supported by Central R&D Center of
Kumho Polychem



Management

Managed by Korean managements and
production



Stable Securing of Raw Materials

Ensure a stable, secure and sustainable supply of
raw material

Management System



Raw Material

- FIFO System
- Material Addressing
- Min/Max stock level
- Min Qty stock control 2 Months



Production System

- Semi automatic Weighing
- Production Process Flow Chart
- Regularly machine maintenance



Quality System

- QCPC
- CoA every lot for traceability
- Internal / External Audit
- Tooling calibration



Storage & Delivery System

- Cooling Room (FMB)
- CMB storage area
- Ontime delivery
- Hold / NG Product area



After Sales Service

- Regularly technical support
- Quick response follow up within 24 hrs

What we can make

CMB

- We provide CMB (Compound Master Batch) which is mixture of polymers together with other chemicals. It is covering the range of mooney viscosity from 10 to 200.



FMB

- We provide FMB (Final Master Batch) which is the final product of rubber compound after curing. It is covering the range of hardness from 30 to 90 (Shore A). We can produce customized size as customers' request.

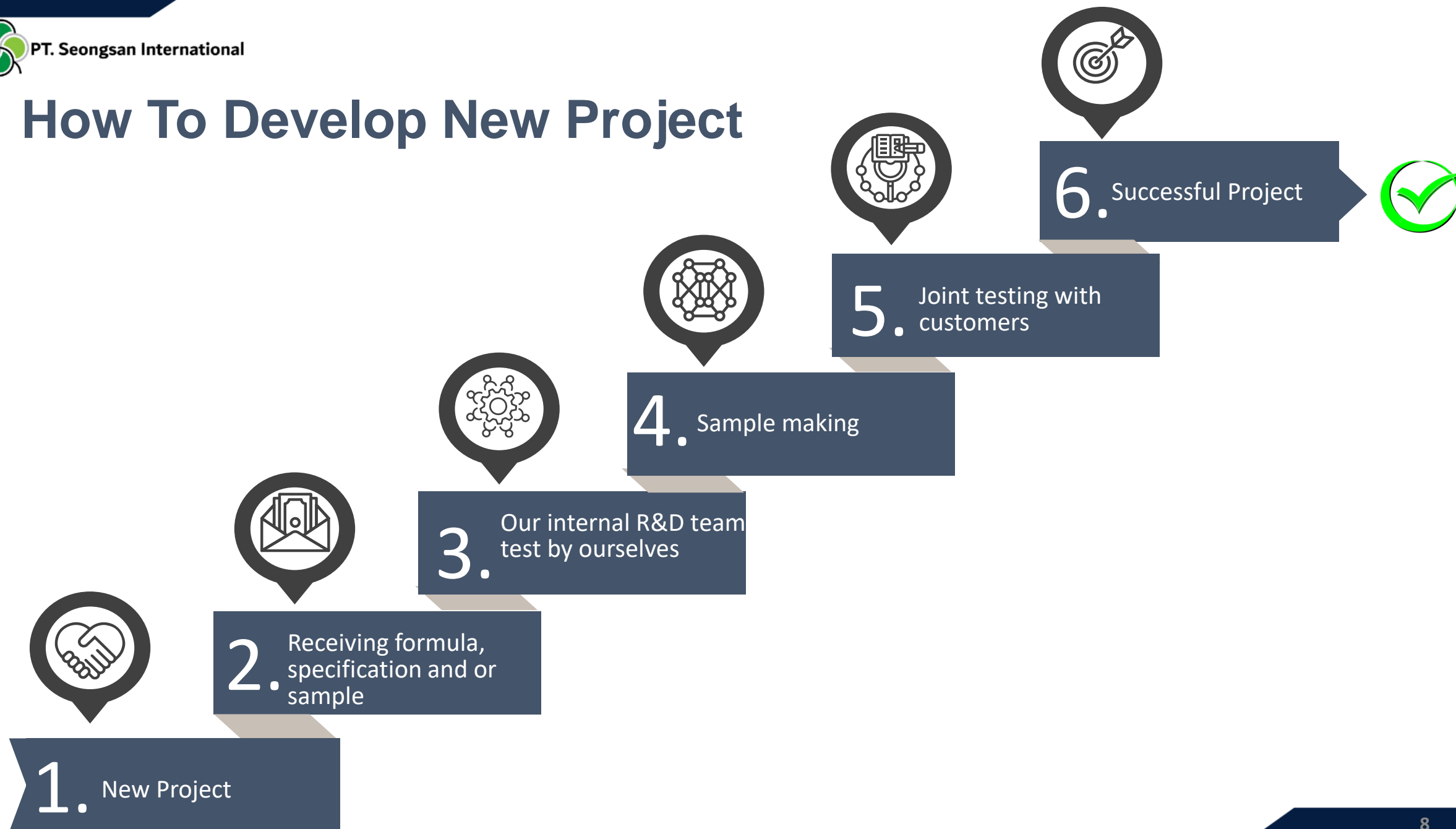


Mixing Service

- We can also support for mixing service of rubber compound as customers' request.



How To Develop New Project



Types Of Compound (CMB & FMB)

- EPDM (Ethylene Propylene Diene Monomer)
- NBR - PVC
- NBR (Acrylonitrile Butadiene Rubber)
- SBR (Styrene Butadiene Rubber)
- BR (Butadiene Rubber)
- Silicone Rubber
- NR (Natural Rubber)



How To Mixing Service



Factory Facilities (Mixing Machine, Storage)

No	Facility	Qty	
MIXING MACHINE			
1	150 L Kneader	2	Set
	a. 22 Inch Open Roll	2	Set
	b. 22 Inch Blender Open Roll	2	Set
	c. Batch Off Machine	2	Set
2	110 L Kneader	2	Set
	a. 22 Inch Open Roll	2	Set
	b. 22 Inch Blender Open Roll	2	Set
	c. Batch Off Machine	2	Set
3	Rubber Cutting Machine	1	Set
4	Rubber Slitting Machine	2	Set

No	Facility	Qty	Area
WEIGHING CHEMICAL ROOM			
1	Semi Automatic Weighing	55	m ²

No	Facility	Qty
STORAGE		
1	Polymer	200 Ton
2	Filler (Carbon Black, Silica, etc)	110 Ton
3	Oil	70 Ton
4	Chemical	10 Ton

Factory Facilities (Mixing Machine)



Line 1

Kneader 110L

Blender Roll

Open Roll

Batch Off



Line 2

Kneader 150L

Blender Roll

Open Roll

Batch Off



Line 3

Kneader 110L

Blender Roll

Open Roll

Batch Off



Line 4 (Closed Area)

Kneader 150L

Blender Roll

Open Roll

Batch Off

Factory Facilities (Supporting Process)



Factory Facilities (Storage)



Warehouse (355 m2)

Storage up to 300 ton raw material



Cooling Room

Storage up to 30 ton compound

Factory Facilities (Lab. Testing Machine)

No	Facility	Qty	
LABORATORY EQUIPMENT			
1	Rheometer	3	Set
2	Mooney Viscometer	3	Set
3	Hardness Tester	2	Pcs
4	Tensile Tester	1	Set
5	Oven Aging Tester	2	Set
6	Specific Gravity Meter	1	Set
7	Thickness Tester	2	Set
8	Teclock Hardness with Gauge	2	Pcs
9	Ozone Test Machine	1	Set
10	DIN Abrasion	1	Set

No	Facility	Qty	
R & D TESTING EQUIPMENT			
1	2 L Dispersion Kneader	1	Set
2	6 inch Open Mill	3	Set
3	50T Curing Press	2	Pcs

Factory Facilities (R&D)



2L Dispersion Kneader



6 Inch Open Mill



50T Curing Press

Factory Facilities (Laboratory)



Rheometer

3 unit

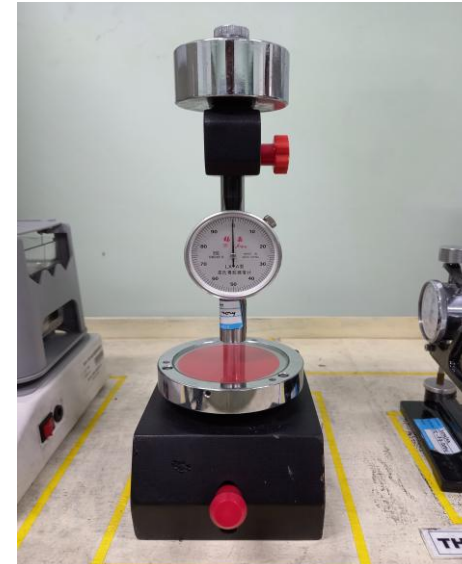
**Capacity Test : 80 bt
per shift**



Mooney Viscometer

3 unit

**Capacity Test : 160 bt
per shift**



Hardness Tester

2 unit

**Capacity Test : 240 bt
per shift**



Tensile Tester

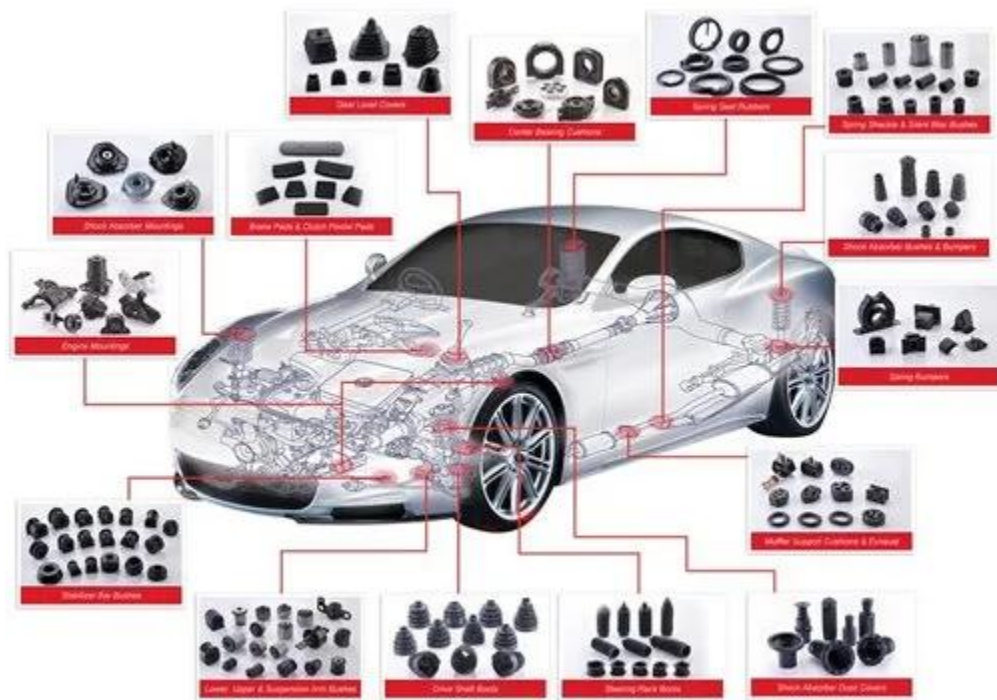
1 unit

**Capacity Test : 46 bt
per shift**

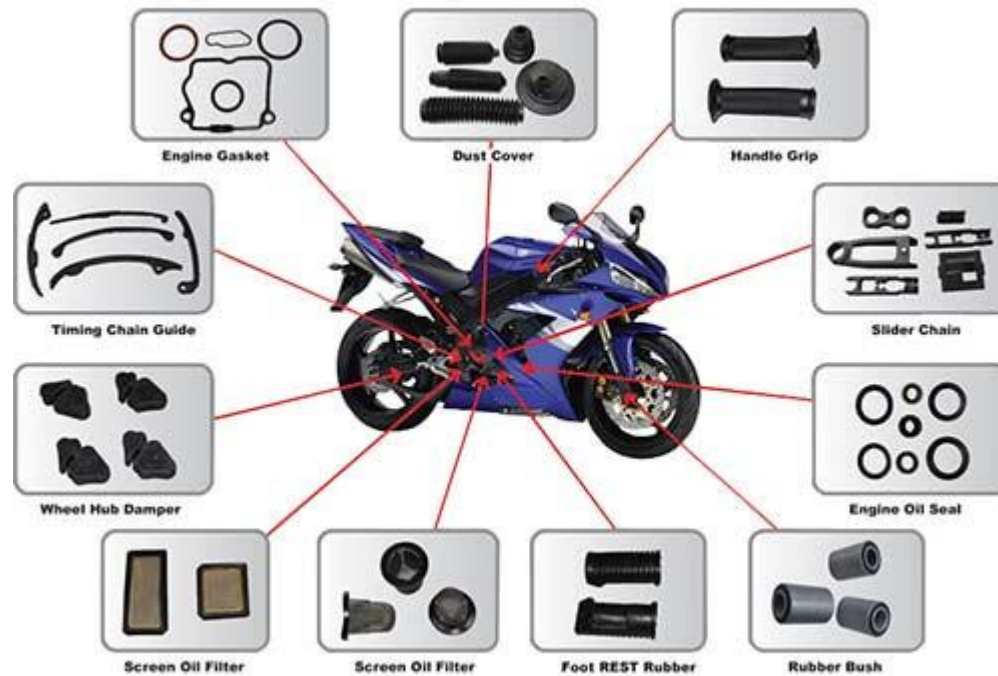
Factory Facilities (Laboratory)



Markets - Automotive



Car Rubber Component



Motorcycle Rubber Component

Markets - Shoes



Markets - Tire



Car Tire



Inner Tube



Motorcycle Tire

Markets - Industries



Rubber Fender



Conveyor Belt

Markets - Houseware



Washing Machine Rubber Component

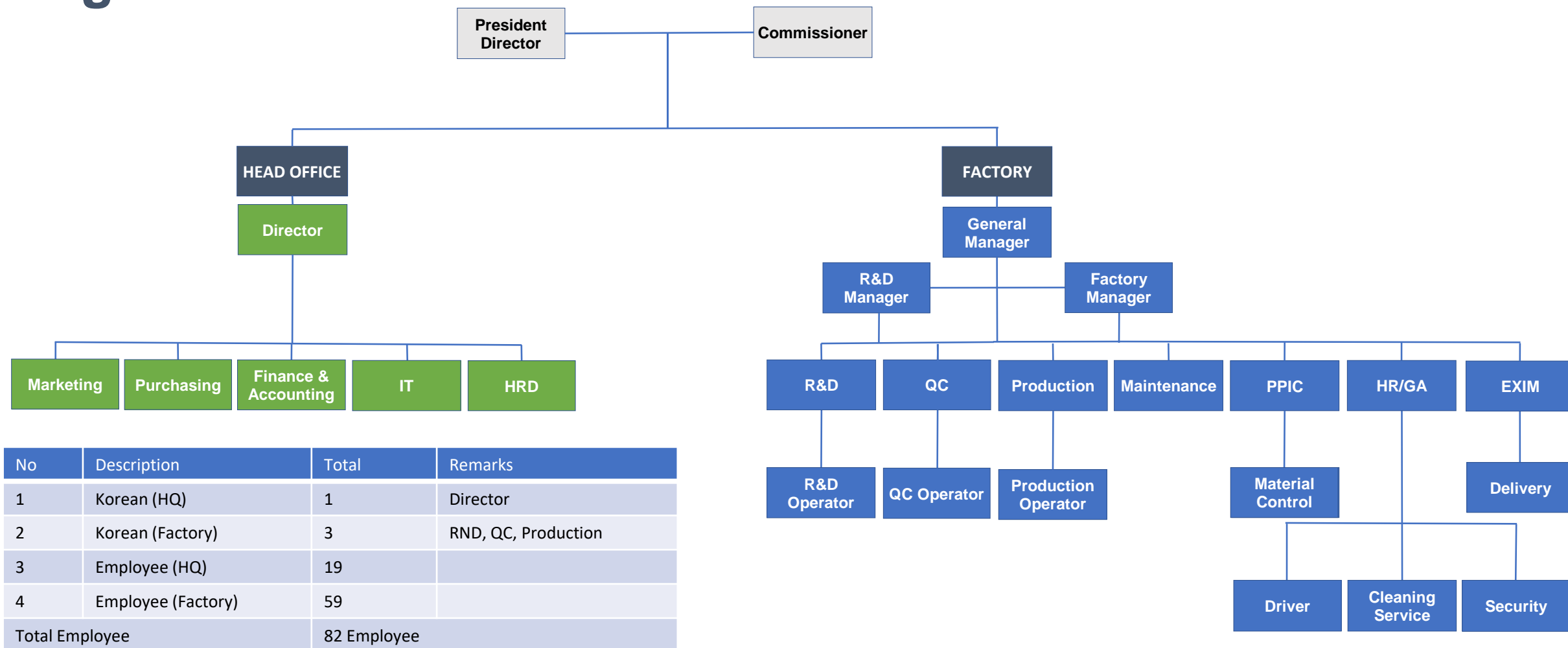


Refrigerator Rubber Component



Another Appliances

Organization Structure



Management System Accreditation




Registration no.	KQ 243330	IAF Code	14
First issue date	2024-03-29	Issue date	2024-03-29
Expiry date	2027-03-28	Reissue date	

CERTIFICATE

Quality Management System Certificate
KS Q ISO 9001:2015/ISO 9001:2015

We certify that the Quality Management System of the Organization:

PT. SEONGSAN INTERNATIONAL

Is in compliance with the standard KS Q ISO 9001:2015/ISO 9001:2015 for the following products/services:

Design, development and manufacture of rubber compounds(natural,synthetic, synthetic resin, EPDM)

General Manager
 Seung-Chan Lee



Maintenance of the certification is subject to continual surveillance audit and dependent upon the observance of Kiwa Korea's certification criteria.

Kiwa Korea Ltd.
 411, SJ Technoville,
 278, Beotkkot-ro,
 Geumcheon-gu,
 Seoul, Korea
 Tel +82.2.3397.0101
 Fax +82.2.3397.0105
 URL: www.kiwa.kr

Certified Sites
 Kawasan Taman Industri Busan Block B4, Desa/Kelurahan Kutruk, Kec. Jambek, Kab. Tangerang, Provinsi Banten, Indonesia




KAB-QC-34

ISO 9001 : 2015




Registration no.	KE 242031	IAF Code	14
First issue date	2024-03-29	Issue date	2024-03-29
Expiry date	2027-03-28	Reissue date	

CERTIFICATE

Environmental Management System Certificate
KS I ISO 14001:2015/ISO 14001:2015

We certify that the Environmental Management System of the Organization:

PT. SEONGSAN INTERNATIONAL

Is in compliance with the standard KS I ISO 14001:2015/ISO 14001:2015 for the following products/services:

Design, development and manufacture of rubber compounds(natural,synthetic, synthetic resin, EPDM)

General Manager
 Seung-Chan Lee



Maintenance of the certification is subject to continual surveillance audit and dependent upon the observance of Kiwa Korea's certification criteria.

Kiwa Korea Ltd.
 411, SJ Technoville,
 278, Beotkkot-ro,
 Geumcheon-gu,
 Seoul, Korea
 Tel +82.2.3397.0101
 Fax +82.2.3397.0105
 URL: www.kiwa.kr

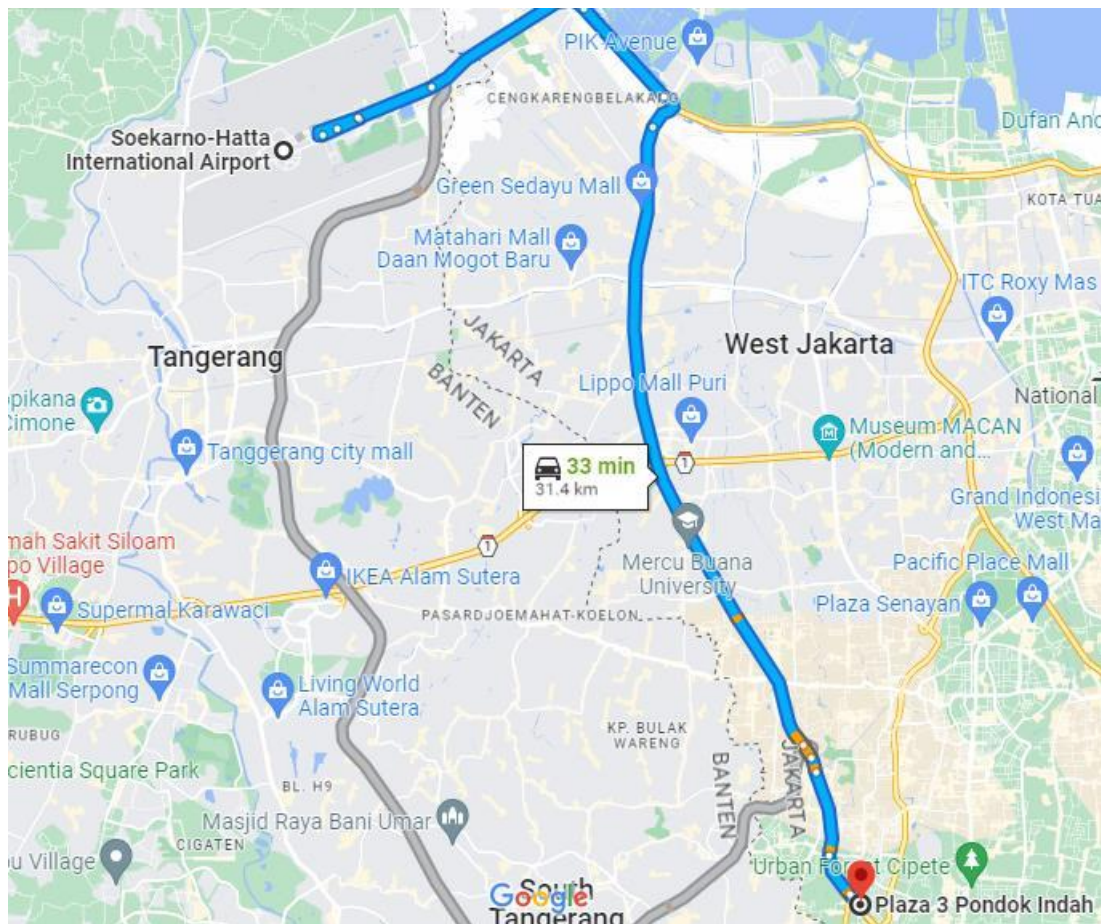
Certified Sites
 Kawasan Taman Industri Busan Block B4, Desa/Kelurahan Kutruk, Kec. Jambek, Kab. Tangerang, Provinsi Banten, Indonesia




KAB-EC-21

ISO 14001 : 2015

Company Information



HEAD OFFICE



Telp

+62-21-22764126

+62-21-75904705



Email

yjpark@seongsan.co.id

swpark@seongsan.co.id

annisaoh@seongsan.co.id



Address

Plaza 3 Pondok Indah blok E no.7

Jl. TB Simatupang Pondok Pinang Jakarta Selatan

FACTORY



Address

Kawasan Taman Industri Busan blok B4 Jl. Raya Kutruk, Tigaraksa, Cikupa Kab. Tangerang



Product

Compound Master Batch
Rubber Sheet



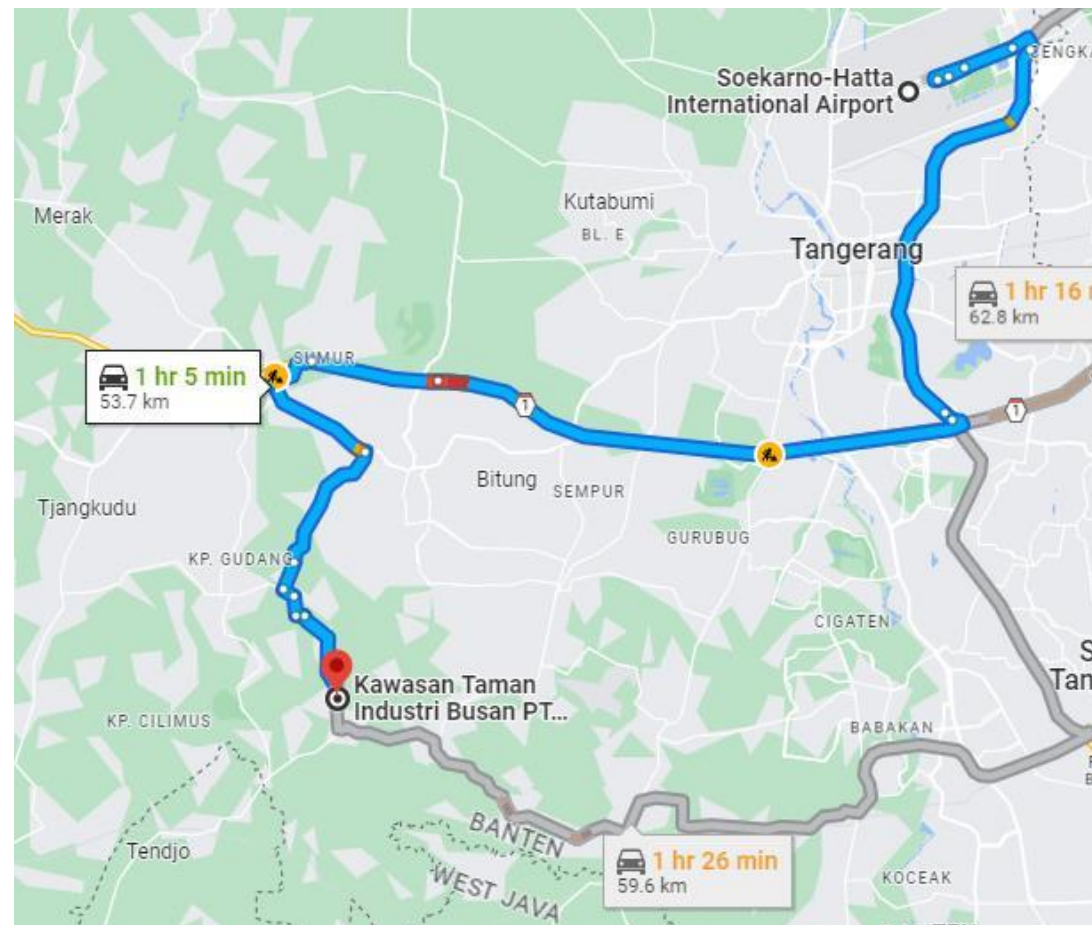
Production

450 MT / month (1 shift)



Factory

Land area - 12,500 m²
Building - 4,196 m²
Warehouse - 1,020 m²



THANK YOU



We wish to have a business with you

W W W . S E O N G S A N . C O . I D